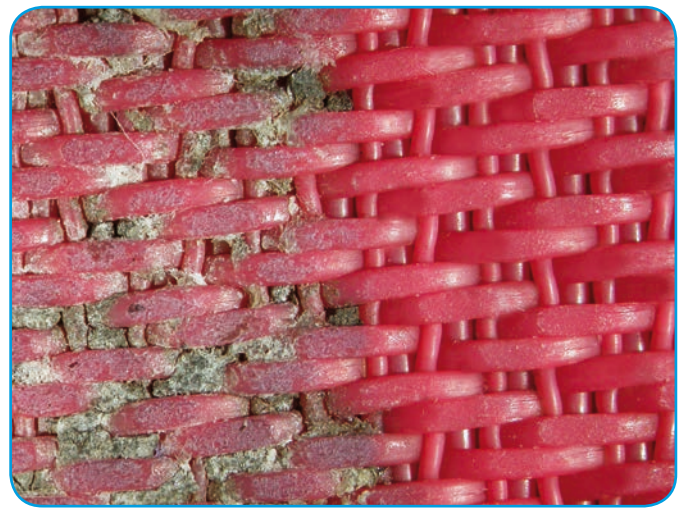


Power Cleaner

High Pressure Cleaning

- for Dryer Fabrics
- for Press Felts
- for Forming Wires

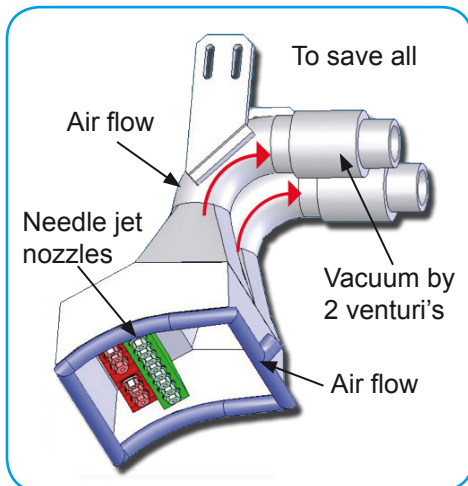


Traversing beam



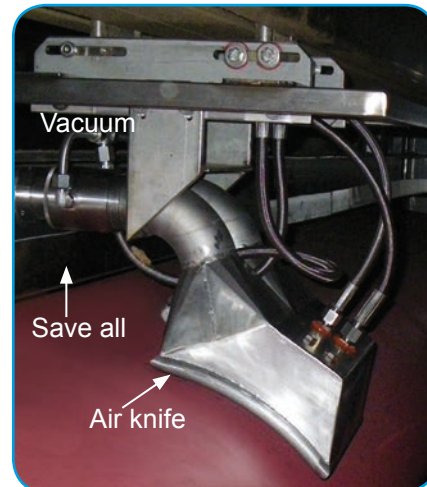
The Power Cleaner is a continuous high pressure traversing shower, designed for the dryer section of paper-, board- and tissue machines. A clean dryer fabric, with consistently high air permeability, delivers important applications. The desired end result of a clean dryer fabric, is a substantial improvement in available dryer capacity.

Cleaning head



1. Continuous mode:

- 24 hours per day, as long as paper machine is running.
- Cleaning pressure: up to 350bar (5000psi).
- Water consumption/ nozzle: 0,5l/min (0.1GPM).
- Multiple nozzle (up to 6) orifice: 0,1 - 0,4mm.
- Air consumption: 1 m3/min (30cfm).



2. Batch (shock) mode:

- Only during breaks.
- Cleaning pressure: up to 80bar (1200psi).
- Batch water consumption: 15l/min (3.5GPM).
- Additional nozzles: 8 (total 14) orifice: 0,8mm.

Energy data

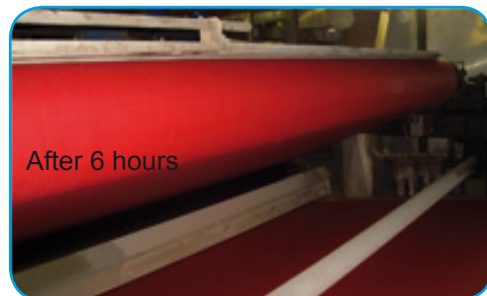
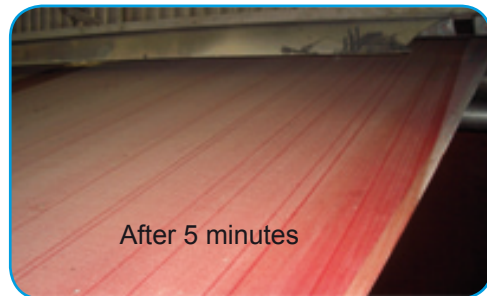
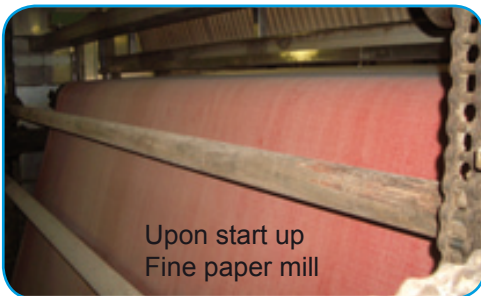
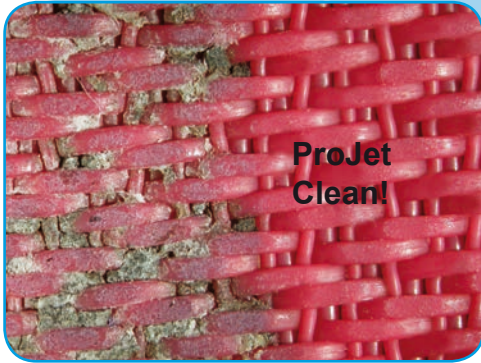
Continuous:

Maximum pressure:
350 bar (5000psig).
Water consumption per nozzle:
0,5 l/min (0.12GPM).
Compressed air consumption:
1,0 m3/min (35CFM).

Batch:

Maximum pressure:
80 bar (1200psig).
Water consumption total:
15 l/min (3.5GPM).
Compressed air consumption:
1,0 m3/min (35CFM).

Cleaning result



Self cleaning station

Drive motor outside dryer hood



60bar water cleans head from inside

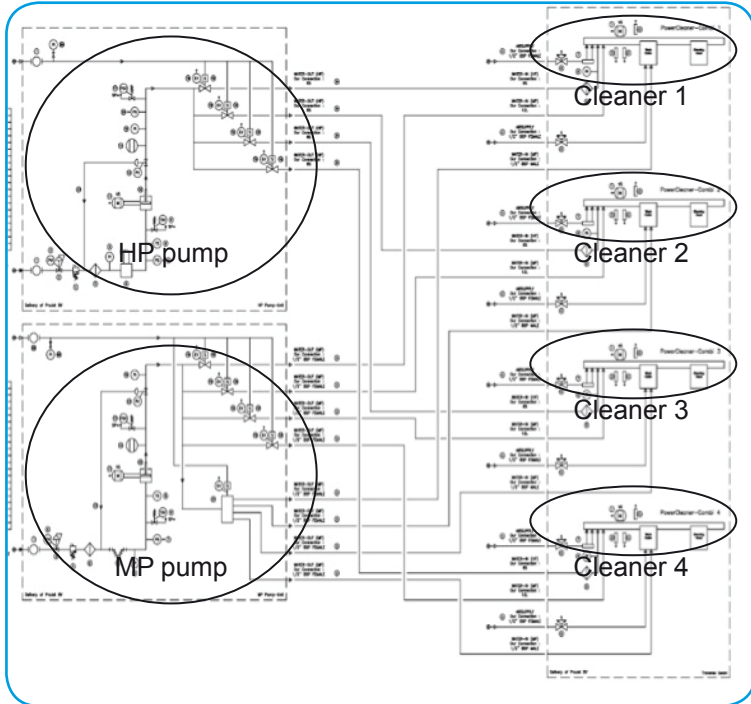
Swing doors close dryer hood

Fully automatic auto-cleaning in park position, outside dryer hood.

Features & Benefits:

- Fully automatic.
- Every 10 - 60 minutes.
- Brush will clean air knife.
- Water will flush cleaning from inside.
- Because park position is outside dryer hood, nozzles can be changed during production without entering the dryer hood.
- Swing doors close dryer hood again, to avoid heat loss.

System layout/ scope of supply



Pump module: up to 5 cleaners can be supplied with one module.

The Pump module is completely assembled on a stainless steel frame, with integrated high pressure filters installed. All safety components, to include pressure switches, temperature switches, solenoid valves, pressure regulator, etc. are included in the pump module supply.

The pump module is completely pre-assembled with stainless steel piping and all electrical connections terminated in a junction box that is part of the pump module supply.

Control system: up to 5 cleaners can be controlled with one system.

A central control cabinet is supplied with single or multiple ProJet cleaning system installations. In addition, each cleaner is supplied with a local control case. As an option, a touch panel control case will be supplied for remote control of all ProJet systems from a control room or other central locations.



Return on Investment

1. Longer life time of fabrics: up to 70%.
2. Reduction of steam: up to 5%.
3. Reduction of breaks due to dirty fabrics: up to 100%.
4. Elimination of downtime for manual cleaning.
5. Higher speed possible due to improved drying: up to 5%.
6. Reduction of chemicals: up to 100%.
7. Elimination of downgrades caused by marking on the sheet by stickies on rolls of fabrics.
8. Better CD profile.